

# Needle valve

## Model NV1

### Features

- As per industrial standards
- Provide complete isolation or throttling of the media.
- perfect alignment for positive air tight shut-off
- optional vent plug for draining purpose
- Designed for mounting below Pressure measuring instruments
- Stainless steel construction and optional exotic material

### Applications

Isolation of instrument from service  
 High pressure lines  
 Liquid and vapour service  
 Process industry, Power plant  
 Chemical and Petrochemical Industries  
 Off shore and on shore processes  
 Oil and gas refineries



Technical specification	2VM
Body	Stainless steel 316 optional Stainless steel 316L, Monel & Hasteloy-C276
Stem	Stainless steel 316 optional Stainless steel 316L, Monel & Hasteloy-C276
Valve assembly	Stainless steel 316 optional Stainless steel 316L, Monel & Hasteloy-C276
Bonnet	Stainless steel 316 optional Stainless steel 316L, Monel & Hasteloy-C276
Tip	Stainless steel 316 optional Stainless steel 316L, Monel & Hasteloy-C276
Connections	1/4" 3/8" 1/2" 3/4" BSP / NPT, others on request
Packing	PTFE up to 240 °C (462 °F) optional Grafoil up to 538 °C (1000 °F)
T-handle	Stainless steel 304
Permissible pressure rating	6000 PSI @ 100°C (212 °F)
Drain Port(Optional)	M8 (F)
Vent plug	Stainless steel 316 optional Stainless steel 316L, Monel & Hasteloy-C276

### Order information

Type	Connection	Form <sup>1)</sup>	System material	Options
NV1	(02) 1/4" NPT	(M/F) Male X female	(S) 316(1.4401)	(NH) Tagging Stamped
	(03) 3/8" NPT	(F/F) Female X female	(L) 316L (1.4404)	(VP) Vent Plug
	(04) 1/2" NPT	(M/M) Male X Male	(P) Monel	(OF) Oil free
	(13) 1/4" BSP		(H) Hastelloy-C276	(CD3) Material certificate for wetted parts
	(14) 3/8" BSP			(CD5) NACE MR0175/ISO15156-2005
	(15) 1/2" BSP			
	(16) M20x1.5			
	Others on request			

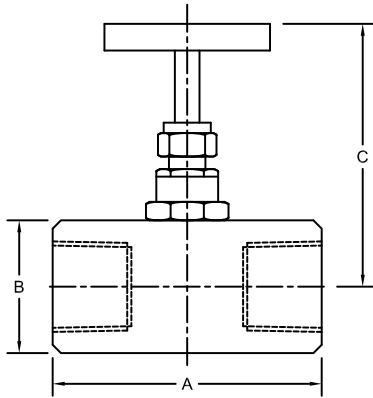
1) For Form, First character indicates Process connection and Second character indicates Instrument connection

### How to order

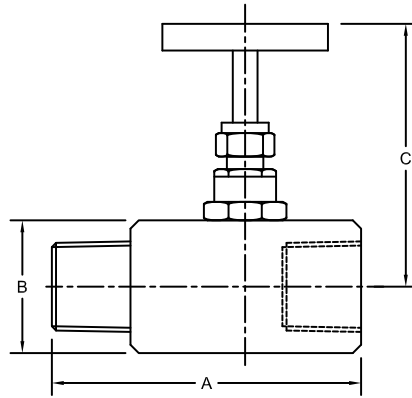
Type	Connection	Form	System material	Options
NV1	04	M/F	S	CD3

All specifications are subject to change without notice.

### General dimensions in mm



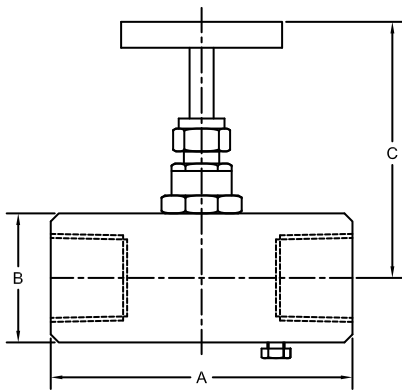
TYPE- FF



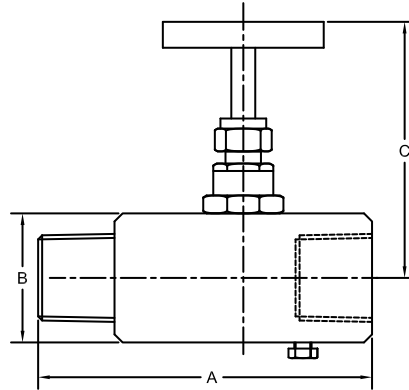
TYPE- MF

SIZE	TYPE	LENGTH A	WIDTH B	HEIGHT MAX C
1/4"	F X F	55	25	65
	M X F	65		
3/8"	F X F	55	25	65
	M X F	65		
1/2"	F X F	65	32	90
	M X F	75		

### Optional Vent or Drain design



TYPE- FF



TYPE- MF

SIZE	TYPE	LENGTH A	WIDTH B	HEIGHT MAX C
1/4"	F X F	70	25	65
	M X F	70		
3/8"	F X F	70	25	65
	M X F	70		
1/2"	F X F	75	32	90
	M X F	83		

Pressure Rating: 6000psi @ 100°F (212 °F)  
Dimension shall be differ for option 10K